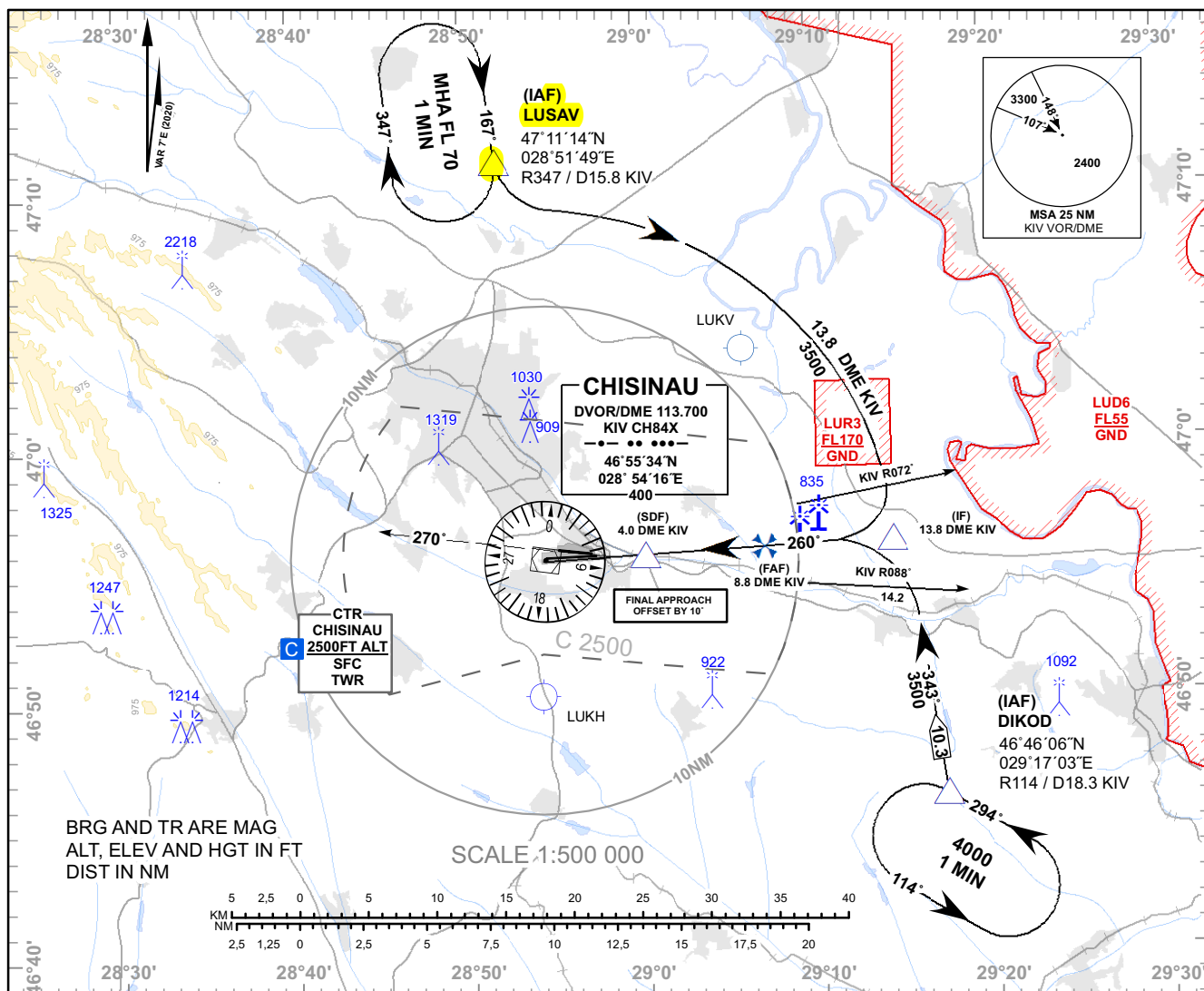


**INSTRUMENT APPROACH
CHART - ICAO**

 AD ELEV 399 FT
 HEIGHTS RELATED TO
 THR RWY 27 ELEV 286 FT

 APP: 133.300 MHz
 TWR: 118.100 MHz
 ATIS: 125.225 MHz

**CHISINAU/Intl (LUKK)
VOR/DME RWY 27**


OCA (OCH)	A	B	C	D
VOR/DME	747 (461)			

DME KIV	9	8	7	6	5	4	3
DIST THR	7.1	6.1	5.1	4.1	3.1	2.1	1.1
ALTITUDE (Height)	2500 (2214)	2279 (1993)	1961 (1675)	1643 (1357)	1324 (1038)	1006 (720)	687 (401)

Timing not Authorized for Defining the MAPt

GS	kt	80	100	120	140	160	180
DISTANCE FAF- MAPt 5.8NM	MIN:SEC	4:21	3:29	2:54	2:29	2:11	1:56
Rate of Descent (5.2%)	FT/MIN	425	531	637	743	849	955

Changes: Tables Rate of Descent and Altitude Corrected.

**INSTRUMENT APPROACH
CHART - ICAO**
**CHISINAU/Intl (LUKK)
VOR/DME RWY 27**

AERONAUTICAL DATA TABULATION		
VOR/DME Approach for RWY27 from LUSAV and DIKOD		
Fix/point	Coordinates	
LUSAV (IAF)	471114.0N	0285149.0E
DIKOD (IAF)	464606.0N	0291703.0E
IF - BRG 260.3° / 13.77NM DME KIV	465614.2N	0291420.7E
FAF - 8.77NM DME KIV	465559.9N	0290703.4E
SDF - 4.03NM DME KIV	465546.0N	0290008.6E
MAPt - 3.03NM DME KIV	465543.0N	0285841.2E
THR RWY27	465548.24N	0285704.55E
KIV VOR/DME	465533.7N	0285416.2E